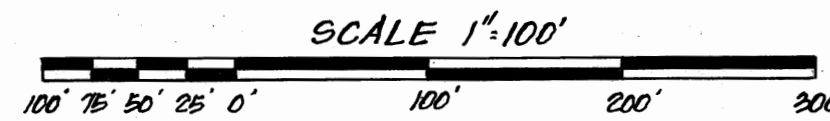


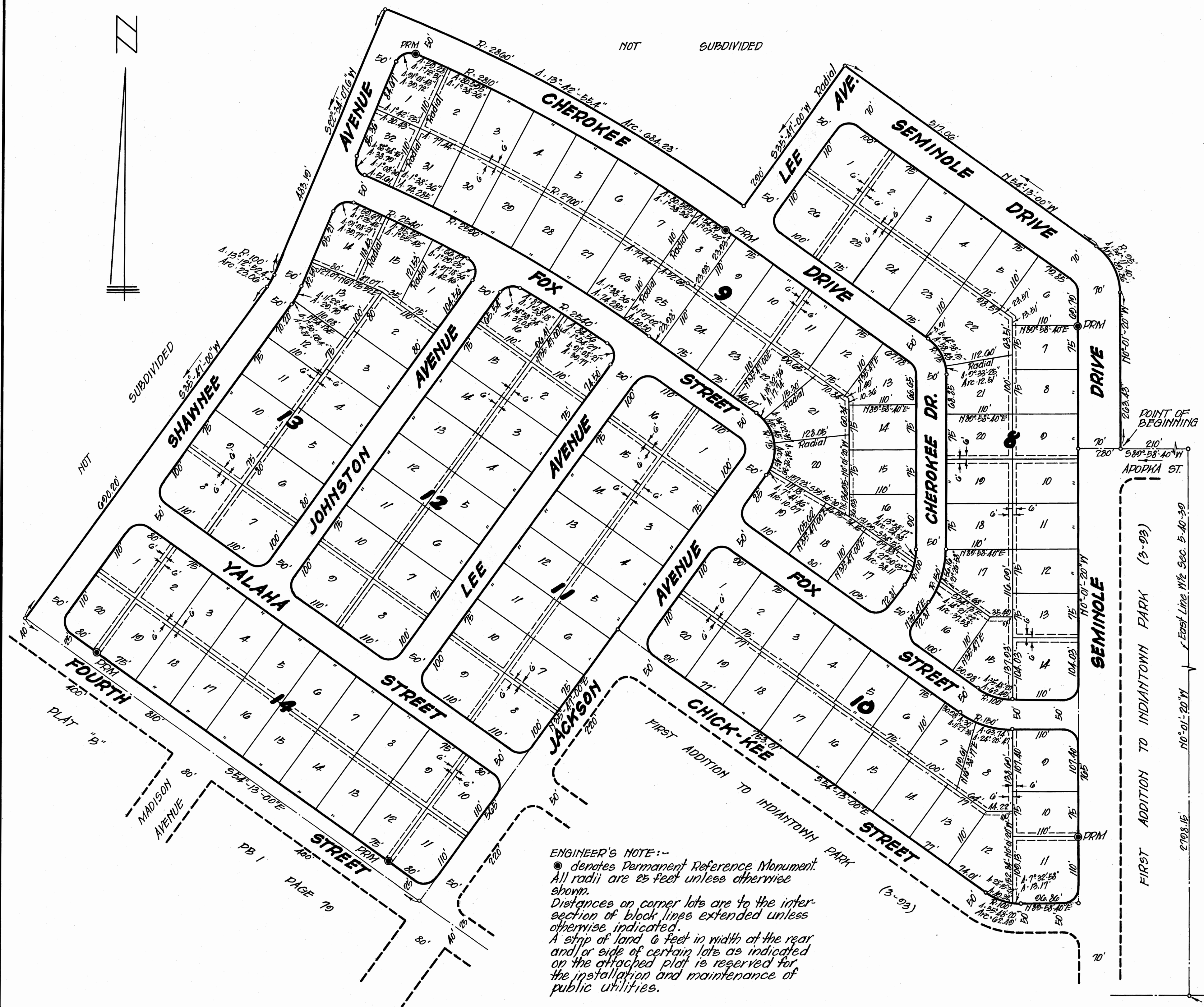
SECOND ADDITION TO INDIANTOWN PARK

A SUBDIVISION OF A PORTION OF SECTION 5 · TWP 40S · RGE. 39E
MARTIN COUNTY FLORIDA

RADER AND ASSOCIATES
ENGINEERS AND ARCHITECTS
MIAMI FLORIDA



JOB NO. 2014
SEPTEMBER 1958
SHEET 1 OF 1



ENGINEER'S NOTE:-
● denotes Permanent Reference Monument.
All radii are 25 feet unless otherwise shown.
Distances on corner lots are to the intersection of black lines extended unless otherwise indicated.
A strip of land 6 feet in width at the rear and/or ends of certain lots as indicated on the attached plat is reserved for the installation and maintenance of public utilities.

Calc. by CBK
Drawn by CBK
Checked by LFN
Approved JM

DEDICATION

KNOW ALL MEN BY THESE PRESENTS: That TAYLOR MANORS, INC., a Florida Corporation organized and existing under the laws of the State of Florida, the owners of the tract of land shown on the attached plat entitled "SECOND ADDITION TO INDIANTOWN PARK" and more particularly described as follows:

Commencing at the South 1/4 corner of Section 5, Township 40 South, Range 39 East, Martin County, Florida, thence No°-01'-20" W along the East line of W 1/2 of said Section 5 for a distance of 2798.15 feet to a point; thence S 89°-58'-40" W for a distance of 210 feet to the Point of Beginning; thence No°-01'-20" W for a distance of 265.48 feet to a point of curvature of a circular curve to the left; thence Northwestwardly along the arc of said circular curve to the left, having a radius of 100 feet and a central angle of 54°-11'-40", for a distance of 89.86 feet to a point of tangency; thence N54°-13'-00" W for a distance of 517.06 feet; thence S 35°-47'-00" W for a distance of 200 feet to a point on the arc of a circular curve to the left radial to the last mentioned line; thence Northwestwardly along the arc of said circular curve to the left, having a radius of 2860 feet and a central angle of 13°-42'-55.4", for a distance of 684.23 feet; thence S 22°-34'-07.6" W for a distance of 483.19 feet to a point of curvature of a circular curve to the right; thence Southwestwardly along the arc of said curve to the right, having a radius of 100 feet and a central angle of 13°-12'-52.1", for a distance of 23.06 feet to a point of tangency; thence S35°-47'-00" W for a distance of 690.20 feet; thence S54°-13'-00" E for a distance of 810 feet; thence N35°-47'-00" E for a distance of 565 feet; thence S54°-13'-00" E for a distance of 753.01 feet to a point of curvature of a circular curve to the left; thence Southeastwardly along the arc of said circular curve to the left, having a radius of 100 feet and a central angle of 35°-48'-20", for a distance of 62.49 feet to a point of tangency; thence N89°-58'-40" E for a distance of 96.86 feet; thence N 0°-01'-20" W for a distance of 765 feet; thence N89°-58'-40" E for a distance of 70 feet to the Point of Beginning.

has caused the same to be surveyed and platted and do hereby dedicate to the perpetual use of the public for proper purposes, all of the Streets, Drives and Avenues shown hereon, reserving, however, unto itself, its successors, assigns or legal representatives, the reversion or reversions of the same whenever abandoned by the public or discontinued by Law.

In Witness Whereof, it has caused these presents to be signed by its President and attested by its Secretary this 12th day of September AD 1958.

TAYLOR MANORS, INC.

Attest: Harold Jacobs SECRETARY By: Jack Taylor PRESIDENT
HAROLD JACOBS JACK TAYLOR

ACKNOWLEDGEMENT

STATE OF FLORIDA
COUNTY OF DADE ss I HEREBY CERTIFY: That on this day personally appeared before me an officer duly authorized to administer oaths and take acknowledgements, Jack Taylor, President and Harold Jacobs, Secretary respectively of TAYLOR MANORS, INC., a Corporation organized and existing under the Laws of the State of Florida, and to me well known to be the persons described who executed the foregoing instrument, and acknowledged to and before me that they executed the same for the uses and purposes therein expressed.

Witness my hand and seal this 12th day of September AD 1958.

My Commission Expires: October 31, 1958

Harry J. Fairman
NOTARY PUBLIC STATE OF FLORIDA AT LARGE

This Plat was approved and the foregoing dedication was approved and accepted by the Board of County Commissioners of Martin County, Florida, this 23rd day of September AD 1958.

Approved: E. J. Arnold BOARD OF COUNTY COMMISSIONERS
Chairman

WE HEREBY CERTIFY: That the attached Plat entitled "SECOND ADDITION TO INDIANTOWN PARK", is a true and correct representation of the land as recently surveyed and platted under our directions; also that the Permanent Reference Monuments were set on the 16th day of September AD 1958, in accordance with Section 7, Chapter 10275 (No. 253) Laws of the State of Florida.

RADER AND ASSOCIATES

File No. 65012

By: Carl M. Rader
REGISTERED ENGINEER NO. 717
REGISTERED SURVEYOR NO. 106
STATE OF FLORIDA

Filed for Record this 23rd day of September AD 1958 at 1:32 P.M. in Book 3 of Plats, Page 101 of the Public Records of Martin County, Florida. This complies with the Laws of the State of Florida.

Joseph P. Pierce
CLERK OF CIRCUIT COURT
By: Letti Zanits, W. C.